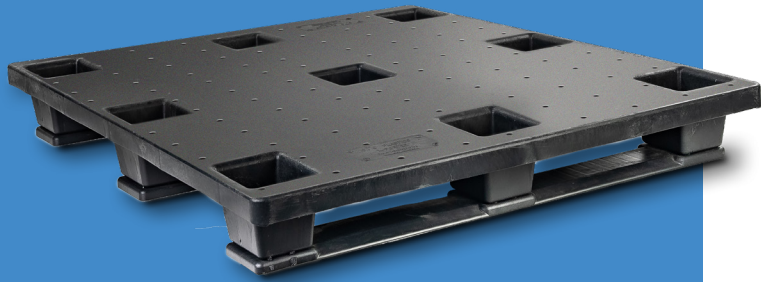


XPorter® II-S

STACKABLE
LIGHTWEIGHT PALLETTS



FEATURES

- Environmentally friendly
- Made from recycled plastic
- Sonic welded 3 stringer design for stackable applications
- Slip resistant deck
- 4 way entry for pallet jack or fork lift entry
- Multiple material grades available for single-use, multi-use or freezer grade
- Available in stackable or nestable footprint
- Meets all international shipping standards

Application

Used in distribution, food, pharmaceutical, grocery, 3 PL's and many more industries

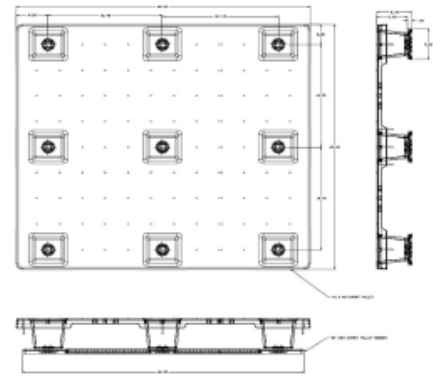
Size

48" x 40"

Quality

ISPM-15 certified

Color Options



MODEL	PRODUCT WEIGHT	DYNAMIC LOAD CAPACITY	STATIC LOAD CAPACITY	ACCESS/ ENTRY	53' TRAILER QTY
XPORTER II-S 4840 Nestable, C grade	20 lbs.	1,200 lbs.	2,200 lbs.	4-way	540
XPORTER II-S 4840 Nestable, B grade	20 lbs.	1,500 lbs.	4,000 lbs.	4-way	540



IMPORTANT: The following supersedes buyer documents. Seller makes NO WARRANTY, REPRESENTATION OR CONDITION OF ANY KIND, EXPRESS OR IMPLIED (INCLUDING NO WARRANTY OF MERCHANTABILITY OR FITNESS OF THE GOODS FOR ANY USE CONTEMPLATED BY BUYER) concerning the Goods and none shall be implied by law. Final determination of the suitability of the Goods for the use contemplated by Buyer is the sole responsibility of Buyer, and Seller shall in no way be responsible for the suitability of the Goods for any particular end use.